

# Informatec-OnQ Interface

---

## USER'S MANUAL

---

Version: 1.0

19/oct/2006

---

## WARRANTY

---

Thank you for purchasing an Informattec product.

After purchase Informattec warrants the this product against any manufacturing defect for 12 months.

Any defective media will be replaced by Informattec, at no cost except shipping and handling, for 12 months after date of purchase.

Informattec may change this product's specifications without prior warning.

---

Informattec Ltda.  
Rua Clélia, 2145 – 11.andar - Lapa  
São Paulo, SP  
05042-001  
Brazil

Telephone: +55 (11) 3868-6700  
Fax: +55 (11) 3868-6701  
E-Mail: [sales@informattec-sp.com.br](mailto:sales@informattec-sp.com.br)  
Website: <http://www.informattec-sp.com.br>

CNPJ: 69.086.346/0001-50  
I.E: 116.666.900.114

---



---

## INDEX

---

WARRANTY.....	2
INDEX.....	3
ABSTRACT.....	4
INSTALATION.....	4
MAIN WINDOW.....	4
SERIAL PORT.....	5
PACKET CONFIGURATION.....	6
SIMULATION CONFIGURATION.....	7
FLOW CHART.....	8

---

## ABSTRACT

---

This application sends data from STI Windows Atenas Informatec call accounting software to OnQ System.

To test it, there is a `Simulation` button that generates a data packet, just like STI Windows Atenas Informatec would do.

---

## INSTALATION

---

To install, copy the file “`InformatecOnQ.exe`” to any directory and execute it.

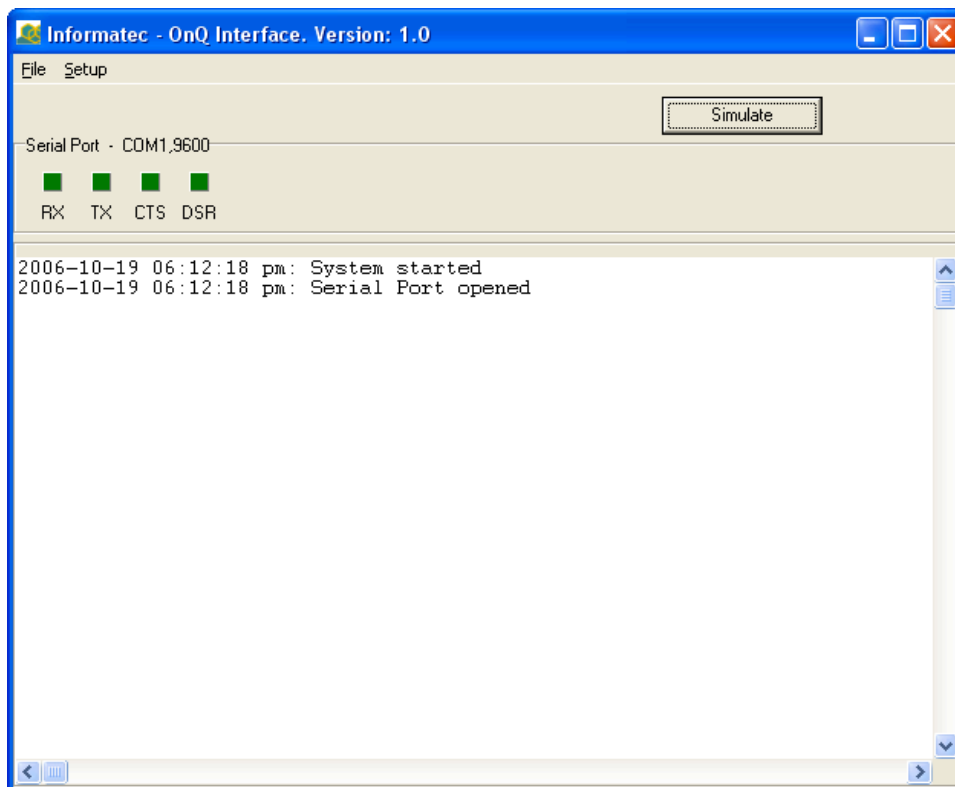
The following directories will be automatically created:

- `Logs` : Log files
- `Packets` : Files that STI Windows Atenas Informatec created
- `PacketsInProgress` : File beeing processed
- `PacketsNotSent` : Files not sent to OnQ (files contained here will not be resent automatically)
- `PacketsSent` : Files sent to OnQ

---

## MAIN WINDOW

---



*Figure 1 – Main window.*

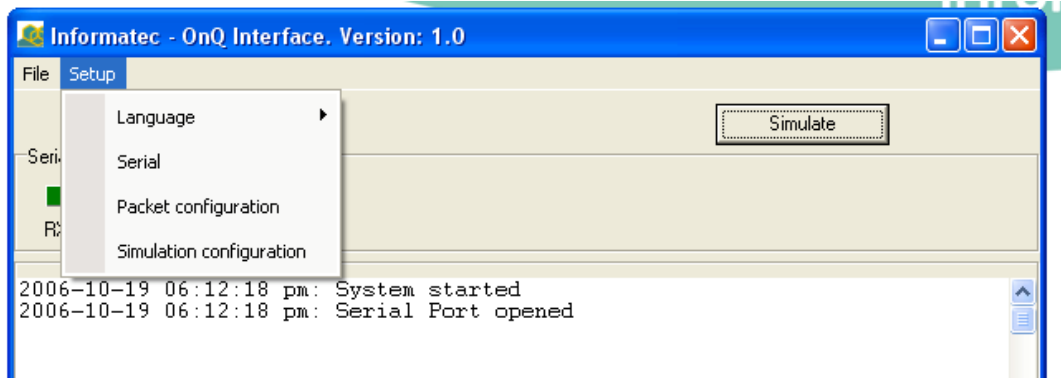


Figure 2 – Items available for the SETUP menu.

---

## SERIAL PORT

---

First, setup the correct serial port using the item Serial from Setup menu.

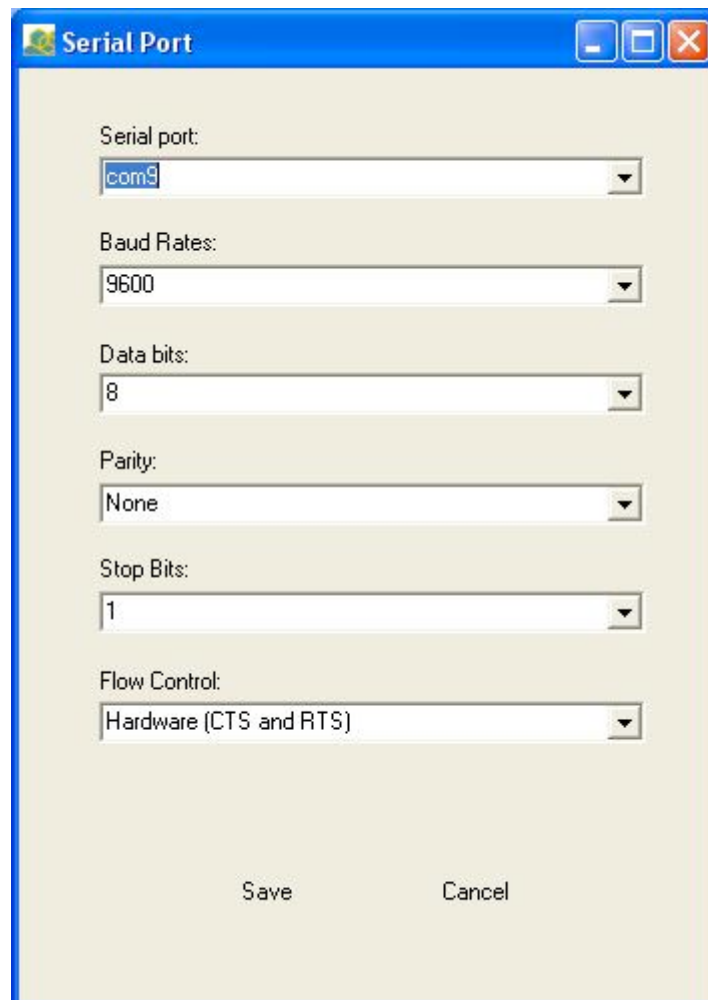


Figure 3 – Options available for the SERIAL item of SETUP menu.

---

## PACKET CONFIGURATION

---

This option allows configuration of the directory where STI Windows Atenas Informatéc stores the files with data to be sent to OnQ.

Another option is `Site Identifier` which is used in the packet sent to OnQ:

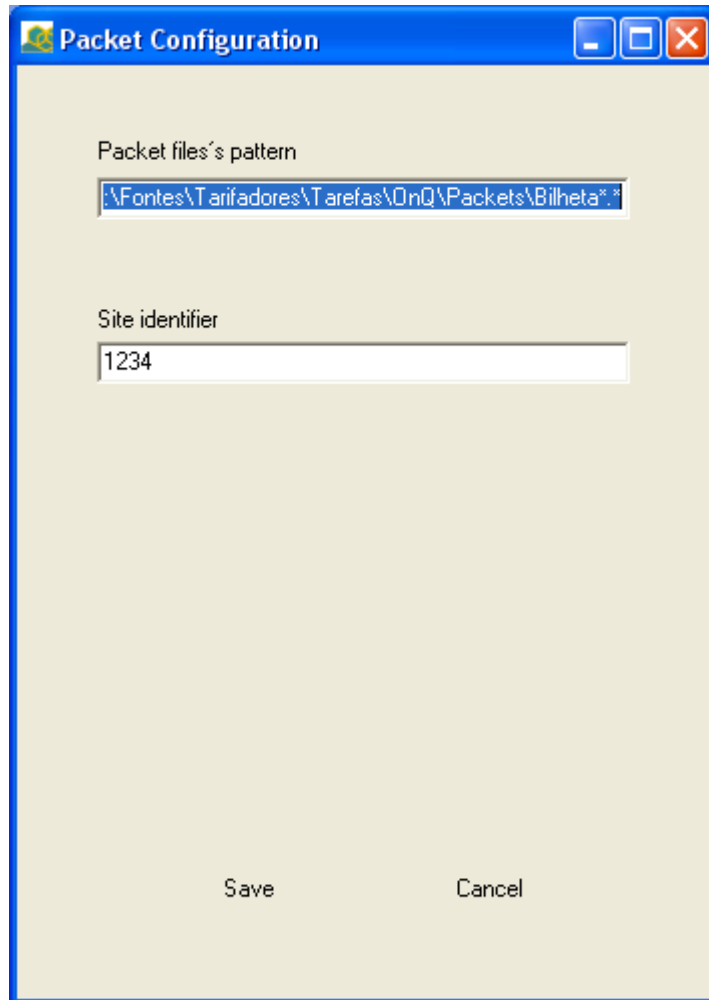


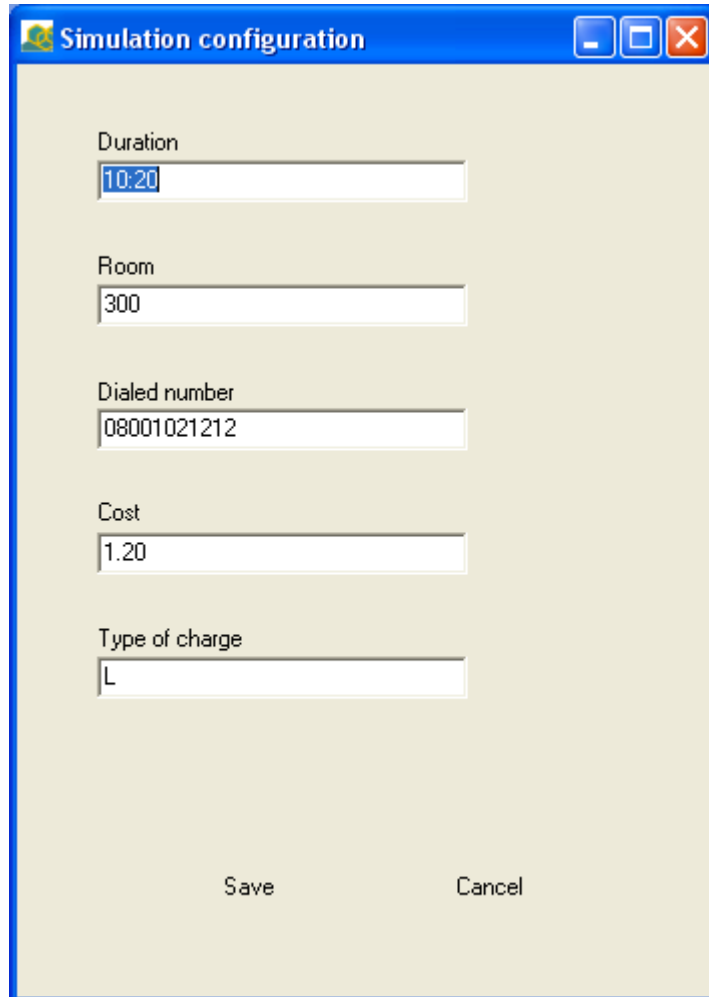
Figure 4 – Options available for the `PACKET CONFIGURATION` item of `SETUP` menu.

---

## SIMULATION CONFIGURATION

---

With this option you can set the parameters used to create a example file to be sent to OnQ. The system date and time are used to complete the packet.



The image shows a dialog box titled "Simulation configuration" with a blue title bar and standard Windows window controls. The dialog has a light beige background and contains several input fields and two buttons at the bottom. The fields are: "Duration" with the value "10:20", "Room" with the value "300", "Dialed number" with the value "08001021212", "Cost" with the value "1.20", and "Type of charge" with the value "L". The "Save" and "Cancel" buttons are positioned at the bottom center of the dialog.

Figure 5 – Options available for the SIMULATION CONFIGURATION item of SETUP menu.

Use button “Simulate” in the main window to send a packet to OnQ.

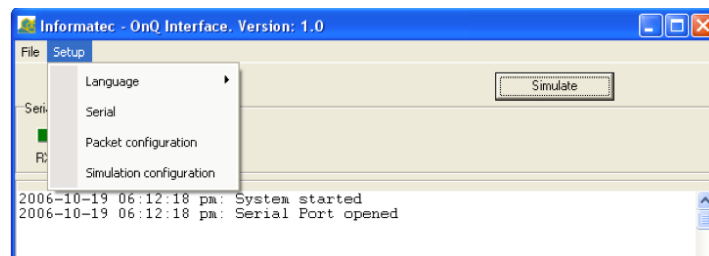


Figure 6 – Main window, where button Simulate is shown on the right.

## FLOW CHART

